

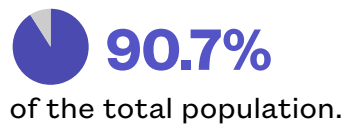
Power of the Purse: Contributions of Hispanic Americans in the McAllen-Edinburg-Mission Metro Area



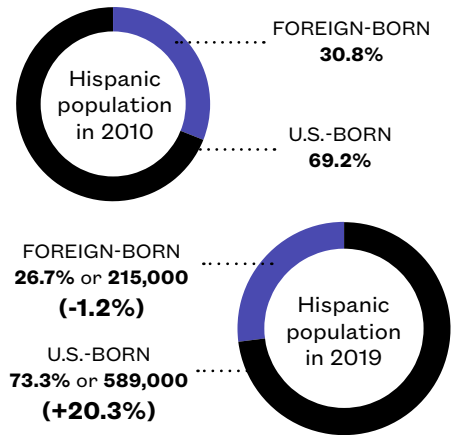
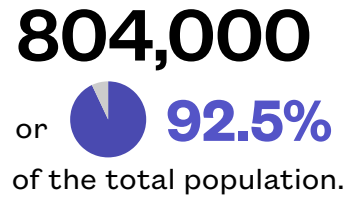
A Snapshot of the Demographic and Economic Contributions of Hispanic Americans in the Metro Area

OVERVIEW

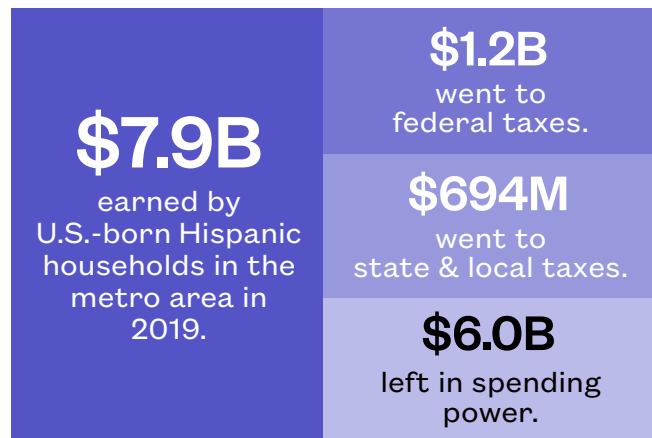
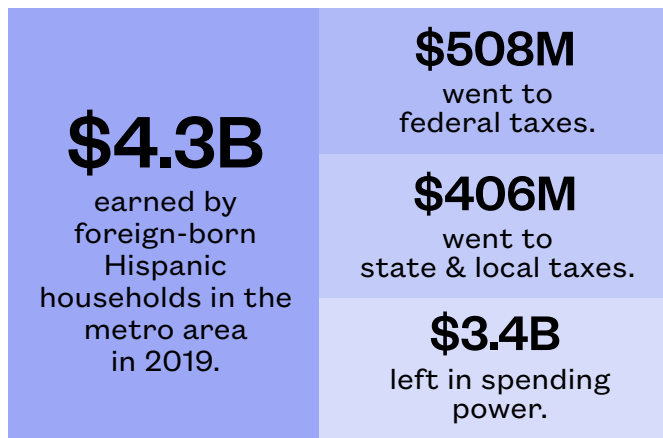
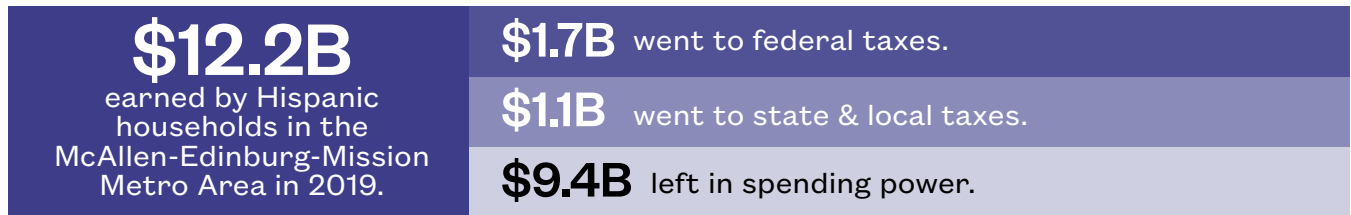
In 2010, more than
707,000
Hispanic Americans lived
in the metro area,
making up



By 2019, the Hispanic
population had increased by
+13.7%
to reach a total of nearly



HOUSEHOLD INCOME



LABOR FORCE PARTICIPATION

More than

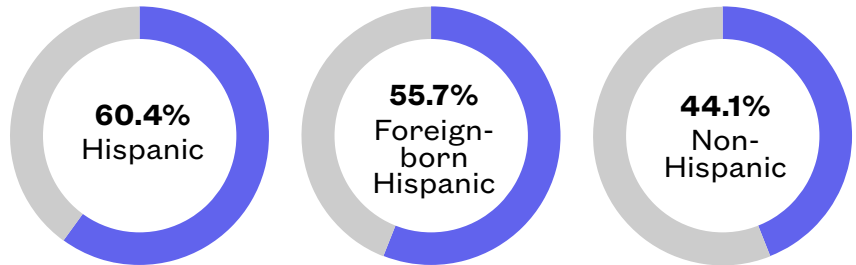
367,000

Hispanic Americans are active in the labor force in the metro area, making up



of the total labor force.

Labor force participation rates in the McAllen-Edinburg-Mission Metro Area in 2019:



VOTING POWER

In 2019, there were nearly

384,000

eligible Hispanic voters in the metro area, including nearly

59,000

who were foreign-born.

Overall, the Hispanic population made up **89.0%** of the electorate in the metro area, including the foreign-born Hispanic population who made up **13.6%**.

